

TOTTERIDGE  
PLACE

N21

VERMONT  
HOUSE

## INSPIRED DESIGN

This stunning four-storey building comprises an exclusive collection of just 14 apartments. These modern 1, 2 & 3 bedroom homes have been finished to the highest specification and benefit from large living areas and private balconies.

Careful thought and consideration has also been given to the external features to ensure the apartments reflect the local area whilst retaining a distinctive identity. The building has been designed with traditional materials and the landscaped green areas ensure that it blends in with its surroundings.

TOTTERIDGE PLACE

N20



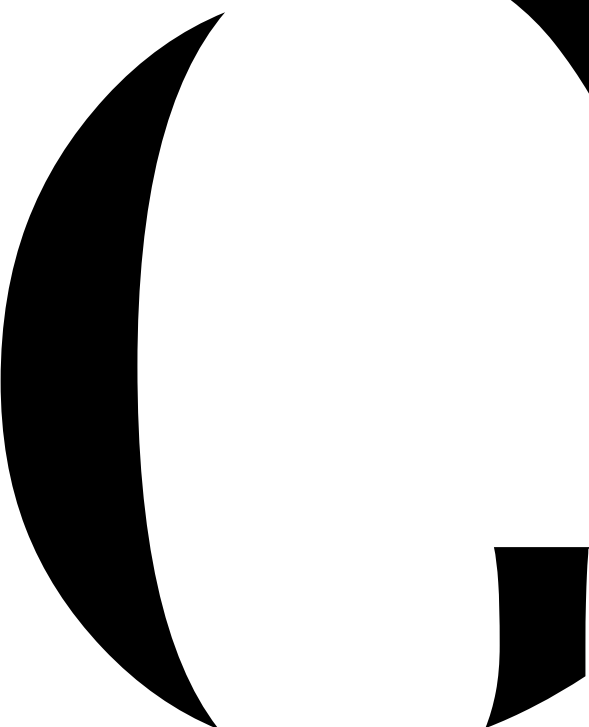
Digital illustration is indicative only



VERMONT  
HOUSE



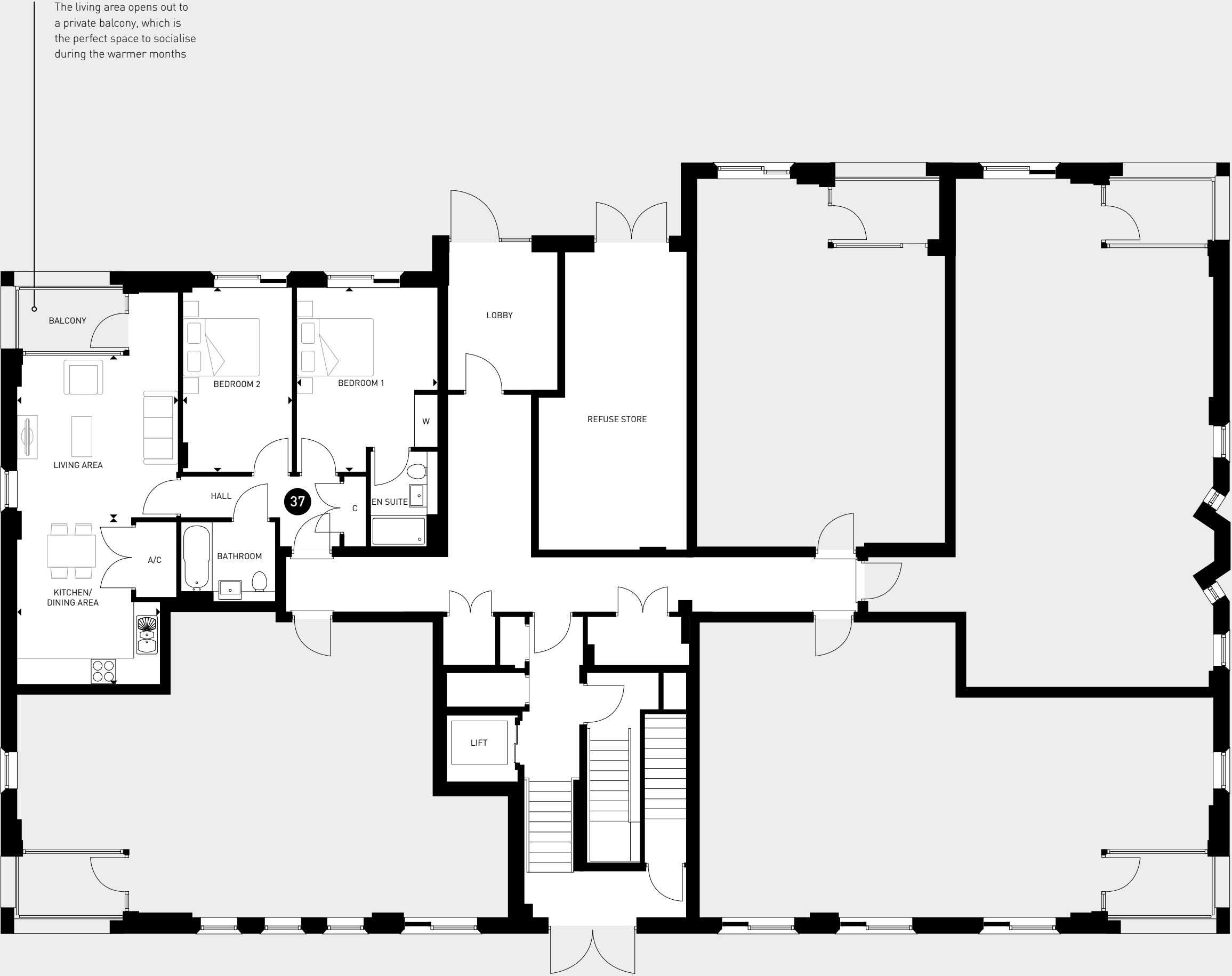
VERMONT  
HOUSE



APARTMENT 37

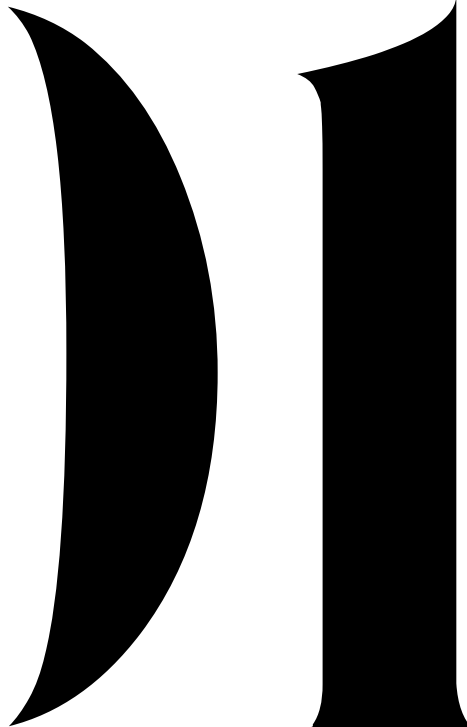
<b>Kitchen/Dining Area</b>
4105mm* x 3498mm*    13'6" x 11'6"
<b>Living Area</b>
4016mm x 3985mm    13'2" x 13'1"
<b>Bedroom 1</b>
4556mm* x 3466mm*    14'11" x 11'4"
<b>Bedroom 2</b>
4556mm x 2740mm    14'11" x 9'0"

Key	
A/C	Airing cupboard
C	Cupboard
W	Wardrobe
*	Maximum dimensions
	Two bedroom apartments
	Shared ownership

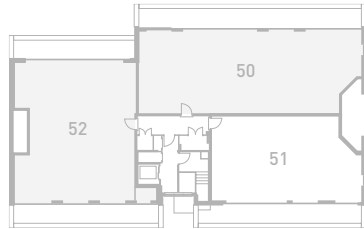




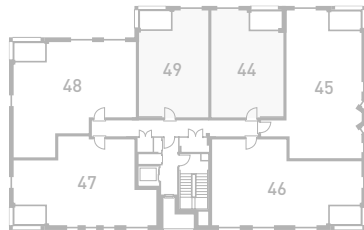
VERMONT  
HOUSE



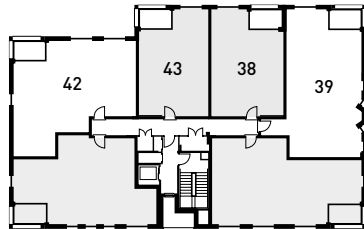
03



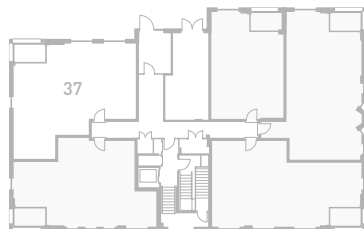
02



01



G



APARTMENT 38

<b>Kitchen</b>	2514mm x 2466mm	8'3" x 8'1"
<b>Living/Dining Area</b>	6514mm* x 3221mm*	21'4"* x 10'7"*
<b>Bedroom</b>	3854mm* x 2721mm*	12'8"* x 8'11"*

APARTMENT 39

<b>Kitchen/Dining/Living Room</b>	6350mm* x 5854mm*	20'10"* x 19'2"*
<b>Bedroom 1</b>	3770mm* x 3537mm*	12'4"* x 11'7"*
<b>Bedroom 2</b>	3054mm x 3156mm*	10'0" x 10'4"*

APARTMENT 42

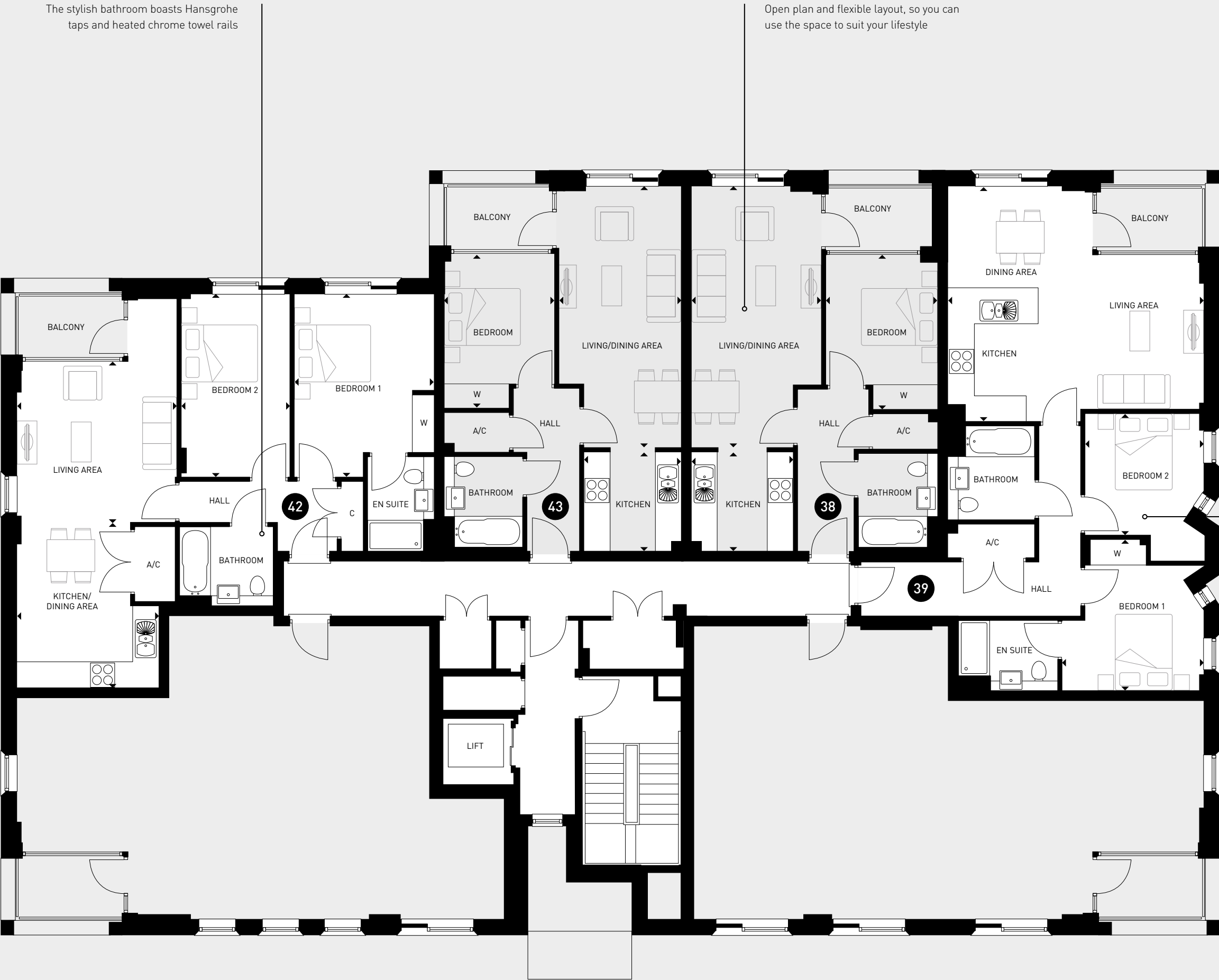
<b>Kitchen/Dining Area</b>	4105mm* x 3498mm*	13'6"* x 11'6"*
<b>Living Area</b>	4016mm x 3985mm	13'2" x 13'1"
<b>Bedroom 1</b>	4556mm* x 3466mm*	14'11"* x 11'4"*
<b>Bedroom 2</b>	4556mm x 2740mm	14'11" x 9'0"

APARTMENT 43

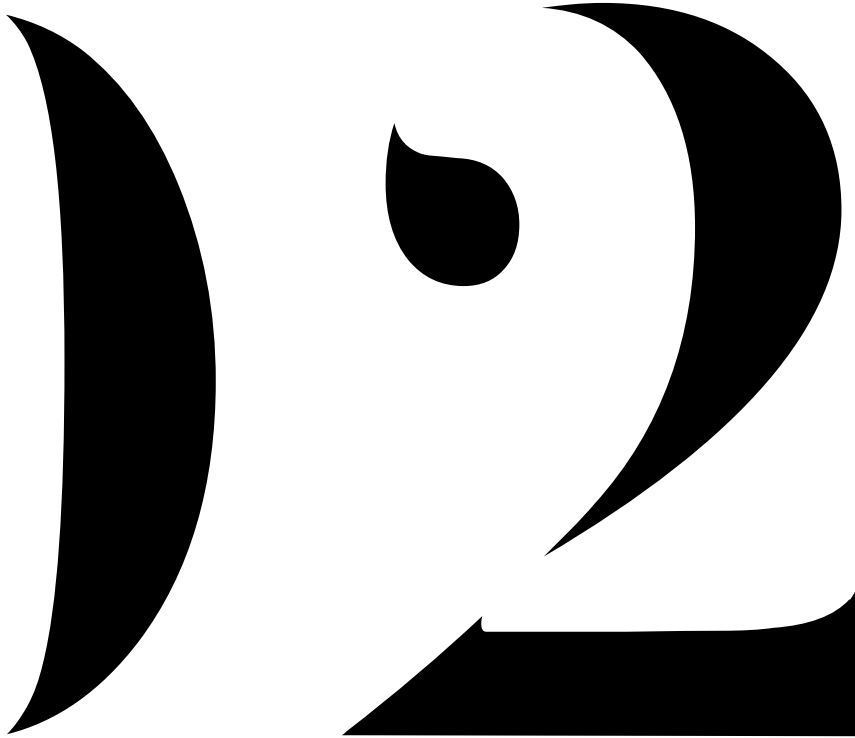
<b>Kitchen</b>	2490mm x 2426mm	8'2" x 8'0"
<b>Living/Dining Area</b>	6516mm* x 3055mm*	21'4"* x 10'0"*
<b>Bedroom</b>	3869mm* x 2725mm*	12'8"* x 8'11"*

Key

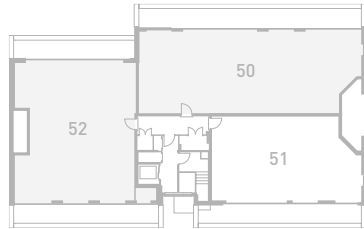
A/C	Airing cupboard
C	Cupboard
W	Wardrobe
*	Maximum dimensions
	One bedroom apartments
	Two bedroom apartments
	Shared ownership



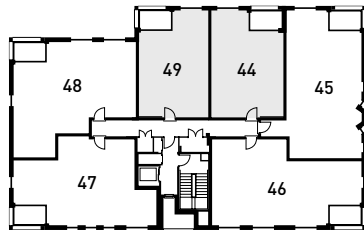
VERMONT  
HOUSE



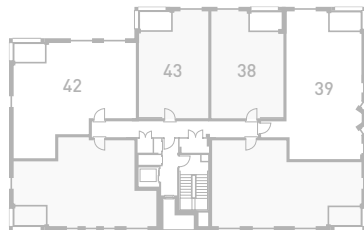
03



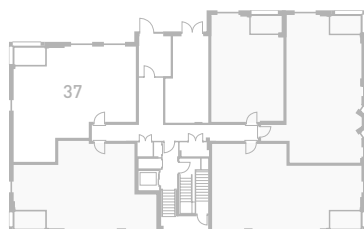
02



01



G



APARTMENT 44

<b>Kitchen</b>	2514mm x 2466mm	8'3" x 8'1"
<b>Living/Dining Area</b>	6514mm x 3221mm	21'4" x 10'7"
<b>Bedroom</b>	3854mm x 2721mm	12'8" x 8'11"

APARTMENT 45

<b>Kitchen/Dining/Living Room</b>	6350mm x 5854mm	20'10" x 19'2"
<b>Bedroom 1</b>	3770mm x 3537mm	12'4" x 11'7"
<b>Bedroom 2</b>	3054mm x 3156mm	10'0" x 10'4"

APARTMENT 46

<b>Kitchen/Dining/Living Room</b>	6997mm x 5403mm	22'11" x 17'9"
<b>Bedroom 1</b>	2968mm x 2762mm	9'9" x 9'1"
<b>Bedroom 2</b>	3667mm x 2756mm	12'0" x 9'1"

APARTMENT 47

<b>Kitchen/Dining/Living Room</b>	5623mm x 5490mm	18'5" x 18'0"
<b>Bedroom 1</b>	3325mm x 4844mm	10'11" x 15'11"
<b>Bedroom 2</b>	3680mm x 2990mm	12'1" x 9'10"

APARTMENT 48

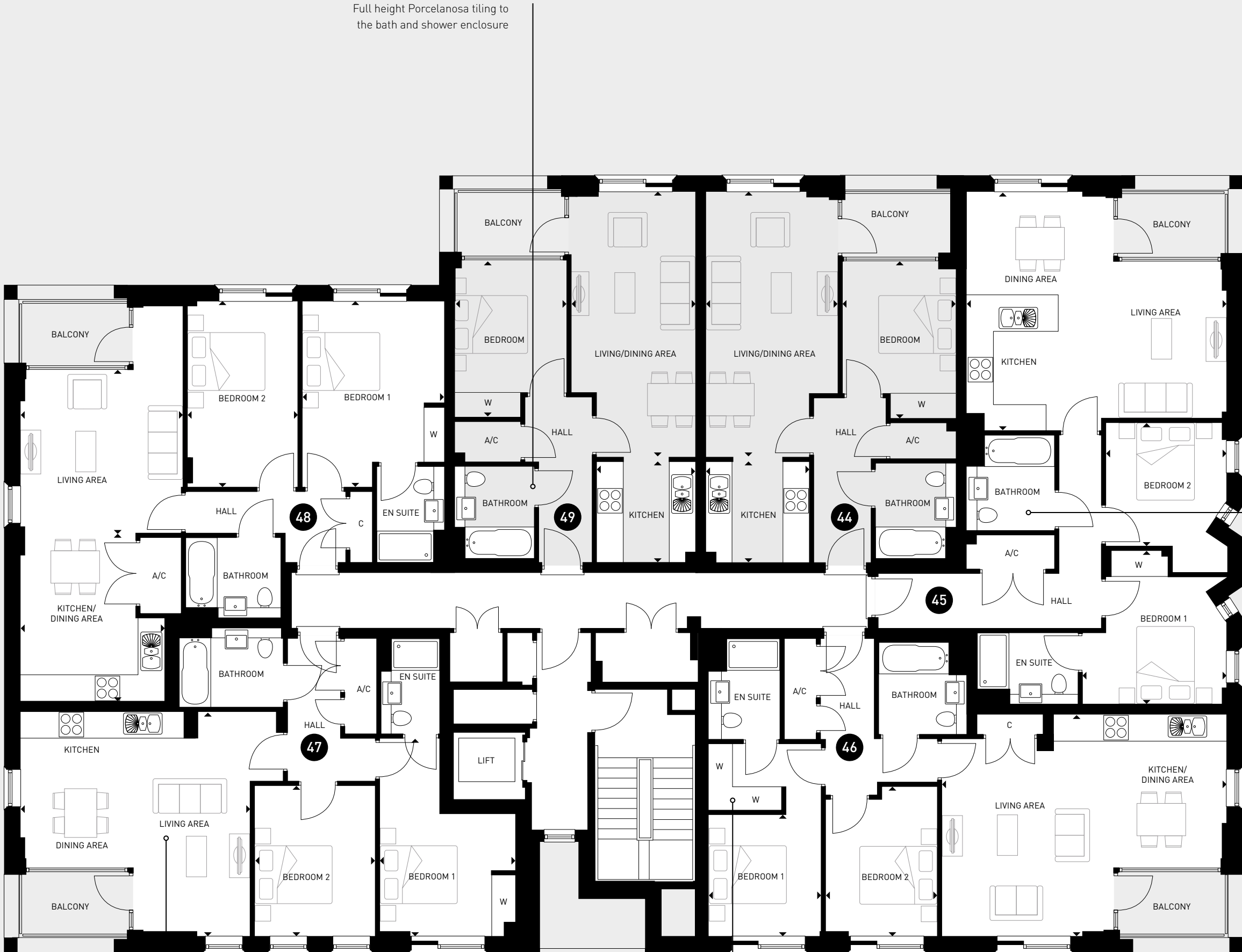
<b>Kitchen/Dining Area</b>	4105mm x 3498mm	13'6" x 11'6"
<b>Living Area</b>	4016mm x 3985mm	13'2" x 13'1"
<b>Bedroom 1</b>	4556mm x 3466mm	14'11" x 11'4"
<b>Bedroom 2</b>	4556mm x 2740mm	14'11" x 9'0"

APARTMENT 49

<b>Kitchen</b>	2490mm x 2426mm	8'2" x 8'0"
<b>Living/Dining Area</b>	6516mm x 3055mm	21'4" x 10'0"
<b>Bedroom</b>	3869mm x 2725mm	12'8" x 8'11"

Key

A/C	Airing cupboard
C	Cupboard
W	Wardrobe
*	Maximum dimensions
□	One bedroom apartments
□	Two bedroom apartments



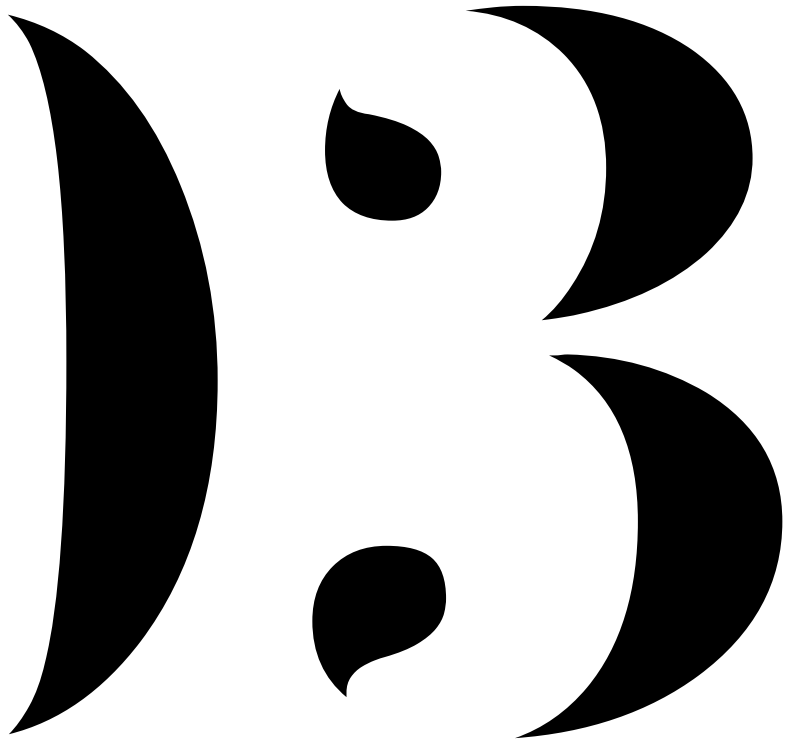
Full height Porcelanosa tiling to the bath and shower enclosure

Ceramic floor tiling to bathroom

A Sonos sound system makes entertaining a pleasure

Spacious master bedroom extensive wardrobe space

VERMONT  
HOUSE



PENTHOUSE 50

<b>Kitchen</b>	4500mm	x	2336mm	15'0"	x	7'5"
<b>Living/Dining Area</b>	6915mm	x	4690mm	22'8"	x	15'8"
<b>Bedroom 1</b>	4973mm*	x	4692mm*	16'4"	x	15'5"
<b>Bedroom 2</b>	4558mm*	x	3008mm*	14'11"	x	9'10"
<b>Bedroom 3</b>	3298mm	x	2802mm	10'10"	x	9'2"

PENTHOUSE 51

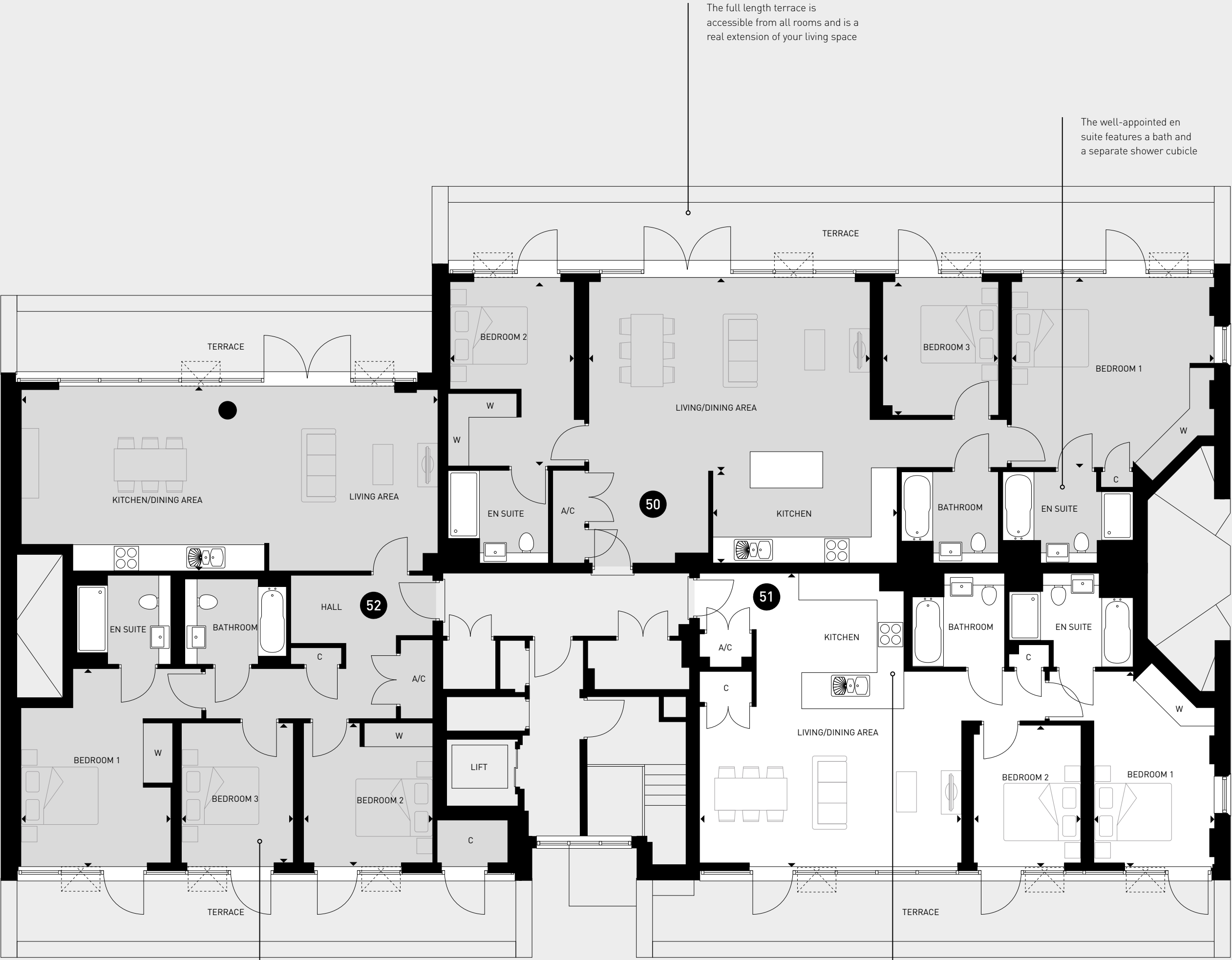
<b>Kitchen/Living/Dining Room</b>	7226mm*	x	6416mm*	23'8"	x	21'1"
<b>Bedroom 1</b>	4837mm*	x	2944mm*	15'10"	x	9'8"
<b>Bedroom 2</b>	3500mm	x	2588mm	11'6"	x	8'6"

PENTHOUSE 52

<b>Kitchen/Living/Dining Room</b>	10256mm*	x	4568mm*	33'8"	x	15'0"
<b>Bedroom 1</b>	4887mm*	x	3634mm*	16'0"	x	11'11"
<b>Bedroom 2</b>	3436mm*	x	3140mm	11'3"	x	10'4"
<b>Bedroom 3</b>	3437mm	x	2700mm	11'3"	x	8'10"

Key

A/C	Airing cupboard
C	Cupboard
W	Wardrobe
●	Load bearing pillar
*	Maximum dimensions
□	Two bedroom apartments
■	Three bedroom apartments



The full length terrace is accessible from all rooms and is a real extension of your living space

The well-appointed en suite features a bath and a separate shower cubicle

All three bedrooms are a generous size

The spacious wrap-around kitchen features soft close doors and Silestone worktops



## OPEN UP TO CONTEMPORARY LIVING

Step inside your new home and surround yourself with luxury.

Every aspect has been finished to the highest specification. The neutral décor gives a clean and fresh finish to the apartments and leaves space for you to add a splash of your own personality.

The built-in appliances ensure your everyday essentials are tucked away and help to create a sense of light and space in the kitchen. The spacious bathroom boasts sleek fixtures and fittings - from the heated towel rails to the beautiful tiling, this is a place you'll want to relax and unwind in.

What's more, the addition of a Sonos sound system makes entertaining a pleasure. Each apartment includes flooring throughout and comes with a parking space in the underground car park. There is also a concierge service located in Highbrook House, designed to help your daily life run more smoothly.















Typical Crest Nicholson show home interiors shown



## IMPRESSIVE SPECIFICATION

### KITCHENS

A fully fitted luxury kitchen combines attention to detail with the highest quality materials and finishes:

- Alno kitchen with Silestone worktops and splashbacks
- Brushed steel Siemens fan assisted single oven to 1 & 2 bedroom apartments
- Brushed steel Siemens fan assisted single oven and microwave oven to 3 bedroom apartments
- Four-ring ceramic induction hob and feature chimney hood
- Siemens fully integrated fridge freezer and dishwasher
- Soft close doors and drawers
- Low energy LED lighting under wall units
- Leisure rangemaster sink with Hansgrohe block mixer taps
- Wine cooler to 3 bedroom apartments

### CENTRAL HEATING

- Centralised Heating Plant for maximised energy efficiency
- Myson Decor V20 radiators, chrome TRVs to all rooms excluding hallways

### BATHROOM, EN SUITE AND CLOAKROOM

- Contemporary white Villeroy & Boch sanitaryware and vanity units
- Hansgrohe taps
- Full height Porcelanosa tiling to the bath and shower enclosure
- Ceramic floor tiling
- Vogue Focus chrome towel rail to bathroom and en suite
- Shaver sockets fitted in all bathrooms and en suites

### JOINERY

- Oak effect internal doors
- White painted stepped architrave
- Satin chrome ironmongery
- Full height sliding wardrobe to master bedroom in 1 & 2 bedroom apartments
- Full height sliding wardrobes to master bedroom and second bedroom in 3 bedroom apartments

### DECORATION

- Internal walls painted white throughout
- Window boards, internal door frames, skirtings and architraves painted with a white gloss finish
- Flooring throughout. Ceramic floor tiling to kitchen, bathroom and en suite, carpet to other areas

### ENVIRONMENTAL FEATURES

- Double glazed windows
- Enhanced insulation
- Pull-out recycling bins in kitchen
- Low energy lighting system
- A rated kitchen appliances

### ELECTRICAL

- Low energy downlighters fitted to the kitchen, bathroom, en suite and cloakroom. Pendant sets to all other rooms
- TV/FM/Sky+\* connections fitted in living room and master bedroom
- Sonos sound system and speakers, controlled by iPad/iPhone app. 1 & 2 bedroom apartments have two ceiling speakers covering the lounge/kitchen. 3 bedroom apartments have two ceiling speakers in lounge, master bedroom and kitchen area

### SECURITY & PEACE OF MIND

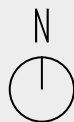
- External doors supplied with chrome multipoint locking system
- Composite timber and aluminium windows and French doors provided with matching white ironmongery and multipoint locking
- Mains operated smoke, heat and carbon monoxide detectors fitted
- NACOSS (or similar approved) alarm system

### COMMUNAL AREAS/SERVICES

- Exclusive concierge service located in Highbrook House
- Lifts to all floors
- Landscaped communal gardens
- Car parking
- Residents cycle store

\*Subject to Sky subscription

# DEVELOPMENT LAYOUT



## GROUND FLOOR

2 BEDROOM APARTMENT  
Apartment 37

## FIRST FLOOR

1 BEDROOM APARTMENTS  
Apartments 38 & 43

2 BEDROOM APARTMENTS  
Apartment 39  
Apartment 42

## SECOND FLOOR

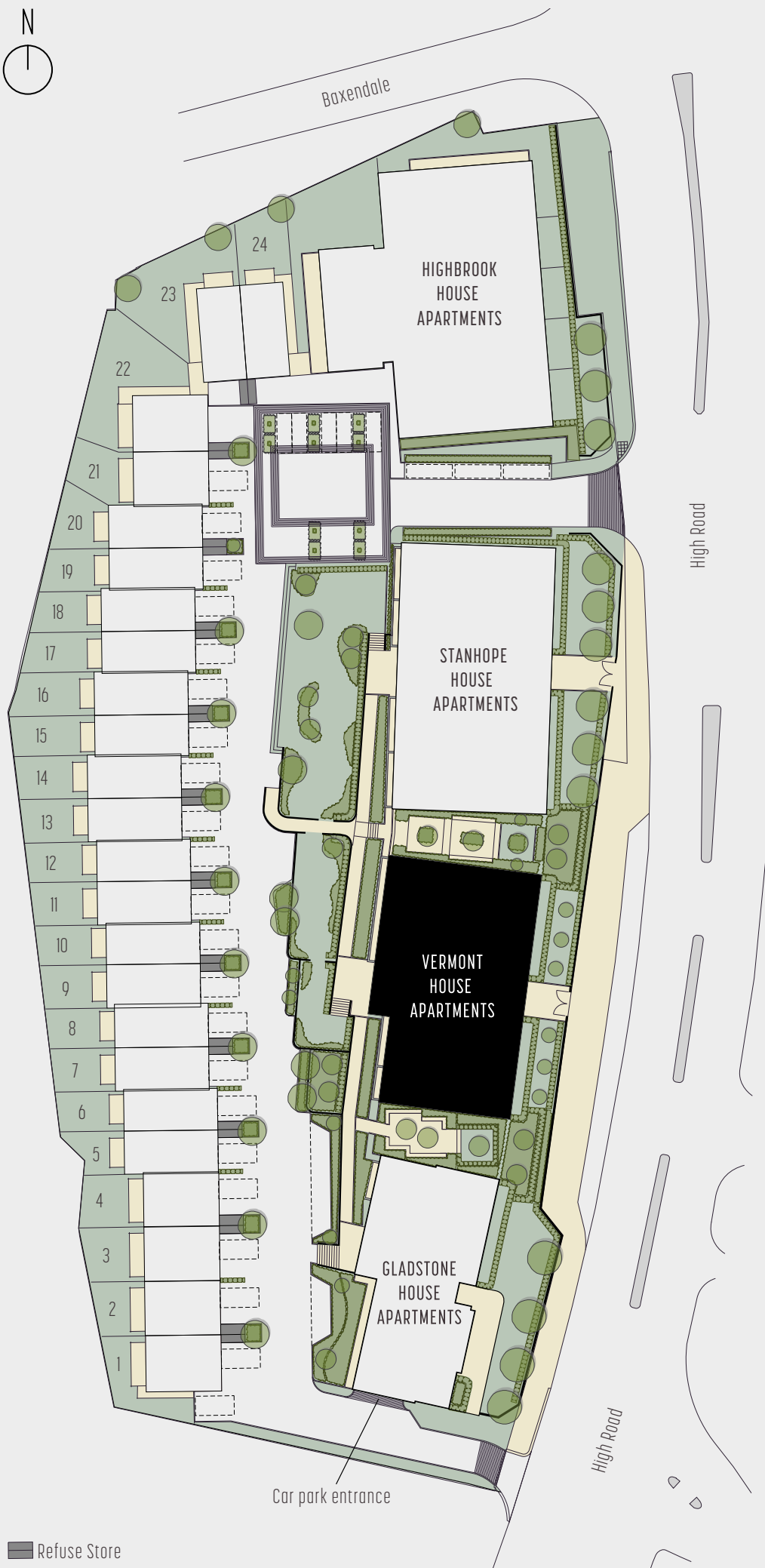
1 BEDROOM APARTMENTS  
Apartments 44 & 49

2 BEDROOM APARTMENTS  
Apartment 45  
Apartment 46  
Apartment 47  
Apartment 48

## THIRD FLOOR

2 BEDROOM PENTHOUSE  
Penthouse 51

3 BEDROOM PENTHOUSES  
Penthouses 50 & 52





Crest  
NICHOLSON

# TOTTERIDGE PLACE N20

1201 High Road,  
Totteridge & Whetstone,  
London, N20 0PD

0203 437 1463

[www.crestnicholson.com/totteridgeplace](http://www.crestnicholson.com/totteridgeplace)  
[totteridgeplace@crestnicholson.com](mailto:totteridgeplace@crestnicholson.com)



Whilst every effort has been made to ensure that the information in this brochure is correct, it is designed specifically as a broad indicative guide only and Crest Nicholson reserves the right to amend the specification at its absolute discretion as necessary and without any formal notice of any changes made. This brochure does not in any way constitute or form any part of a contract of sale transfer or lease. Photography taken at similar Crest Nicholson developments and Computer generated images are indicative only. Please note, the digital illustrations may not accurately depict elevation materials, gradients, landscaping or street furniture. All stated dimensions are subject to tolerances of +/- 50mm. You are strongly advised, therefore, not to order any carpets, appliances or any other goods which depend on accurate dimensions before carrying out a check measure within your reserved plot. Kitchen layouts are again indicative only and are subject to change before completion. Whilst every reasonable effort has been made to ensure that the information contained in this brochure is correct, it is designed specifically as a guide only and Crest Nicholson reserves the right to amend the specification as necessary and without notice at its absolute discretion. This does not constitute or form any part of a contract of sale transfer or lease unless any point that you specifically want to rely on is confirmed in writing by Crest Nicholson and referred to in the contract. Please ask Sales Advisor for further details. May 2017.